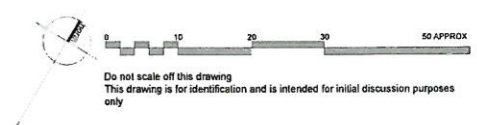


1. Contractors must check all dimensions on site. Only figured dimensions are to be worked from. Discrepancies must be reported to the Architect or Engineer before proceeding. © This drawing is copyright

# PLANNING



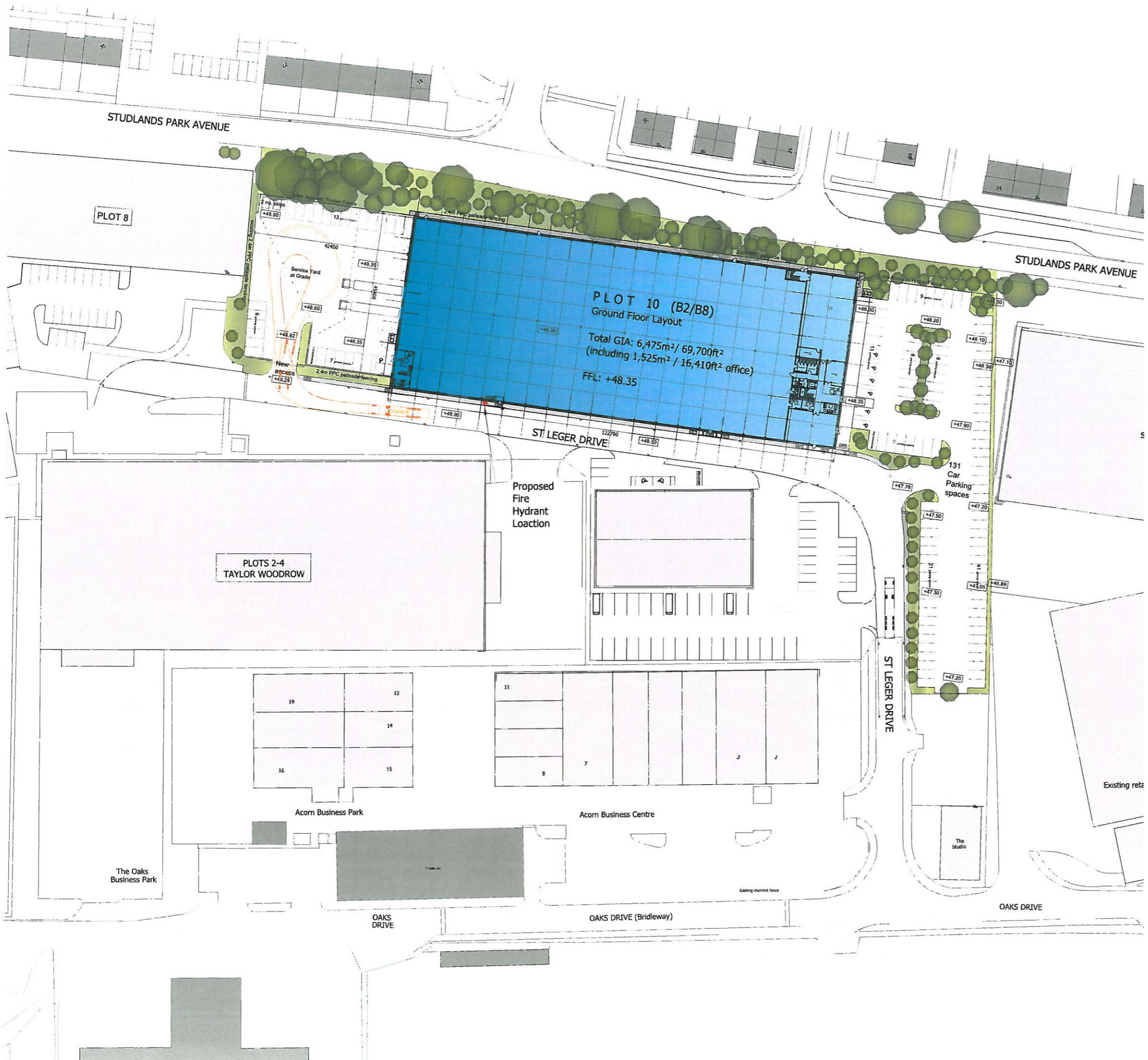
**SCHEDULE OF ACCOMMODATION**

Total building gross external area (GEA):	6,720m <sup>2</sup>
Total site area:	1.33 Hectares
<b>PLOT 10 - B2/B8 UNIT</b>	
Factory gross internal area (GIA):	4,950m <sup>2</sup> (53,300ft <sup>2</sup> )
2 storey office accommodation GIA:	1,525m <sup>2</sup> (16,410ft <sup>2</sup> )
<b>Car Parking:</b>	
124 standard spaces	
7 disabled spaces	
Motorbike spaces:	2 spaces
Bicycle spaces:	12 spaces
HGV (16.5m) spaces	2 docked
<b>TOTAL BUILDING GIA:</b>	<b>6,475m<sup>2</sup> (69,700ft<sup>2</sup>)</b>

**MATERIALS KEY**

- Landscaped Areas to be read in conjunction with 'The Landscape Partnership' drawing: B14045\_01
- Existing Trees to be retained
- Proposed Building
- Proposed tarmac paving to pedestrian areas
- Proposed Tarmac Car parking areas, with white thermoplastic delineation.
- Proposed brushed concrete finish service yard.
- Proposed shingle path to rear of building.

D	BUILDING MOVED 1 BAY NORTH EAST, RECONFIGURED INTERNAL LAYOUT AND PARKING	ERJ	KM	24.07.2015	
C	HEIGHT OF BUILDING REDUCED	ERJ	KM	16.07.2015	
B	ISSUED FOR PLANNING	ERJ	KM	14.01.2015	
A	ISSUED FOR PLANNING	ERJ	KM	07.11.2014	
Revision	Description	Drawn	Checked	Date	
	Preliminary <input type="checkbox"/>	Information <input type="checkbox"/>	Tender <input type="checkbox"/>	Construction <input type="checkbox"/>	As Built <input type="checkbox"/>



**Woods Hardwick**  
 Architects, Engineers and Development Consultants

15-17 Goldington Road  
 Bedford  
 MK40 3NH  
 United Kingdom  
 T. +44 (0)1234 26862  
 F. +44 (0)1234 353034  
 mail@woodshardwick.com  
 www.woodshardwick.com

Title: **NEWMARKET BUSINESS PARK**  
**PLOTS 9-11, ST LEGER DRIVE**

Details: **PROPOSED SITE LAYOUT**

Scale: 1:500@A1 Date: Sept 2014 Drawn: ERJ Chk: KM